



noraplan **unita**

**nora**<sup>®</sup>  
by **Interface**<sup>®</sup>



# Opposites attract

When contrasting materials unite, something distinct and innovative is made. noraplan® unita™ combines solid granite and soft rubber for timeless, subdued style in a class of its own. Fine granite chips add fascinating visual depth and a touch of mineral shimmer to this high-quality rubber flooring — Unique like the stars in the night sky.



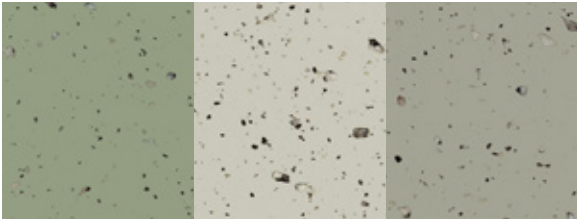




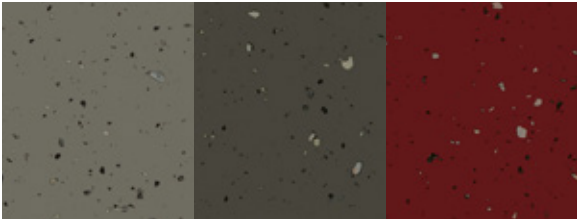




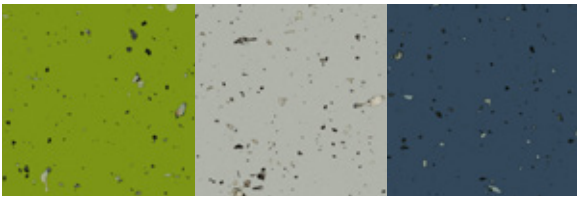
# Refined pairings



7109/7101/7102



7103/7104/7116



7117/7105/7119

A fine scattering of granite chips brings understated style to rubber flooring. With this minimalist design, use the noraplan unita color range to play with personality.

The grid of all color swatches can serve as a guide. Look side to side or up and down to find complementary options. Explore the ideas above or define your own attractive combinations.



COLORS 7101 HERE-N-THERE, 7113 ASK-N-TELL & 7119 WET-N-DRY

© Elmar Witt



COLOR 7108 NEAR-N-FAR



# Why nora® rubber flooring?

## Product Benefits



**Reduced Maintenance**  
Little more than water needed - no finishes, coatings or harsh chemicals necessary.



**Quiet Acoustical Performance**  
Attenuate noise pollution.



**Ergonomic Design**  
Add comfort underfoot, reducing foot and leg pain.



**Durable Surface**  
Withstand extreme stress from heavy rolling loads and wheeled traffic.



**Superior Slip Resistance**  
Help to create safer spaces.



**Supports Infection Control**  
Disinfect thoroughly due to a dense, non-porous surface.

## Sustainability Verifications



**Cradle to Cradle Certified® Silver**  
Certification of whether a product is safe, circular and responsibly made. Applies to nora 926 and 913 compound floor coverings and stair treads.



**GREENGUARD Gold**  
All nora floor coverings & adhesives are certified for low VOC emissions.



**Environmental Product Declaration (EPD)**  
A statement of product ingredients and environmental impacts over the entire life cycle of a product. A comprehensive life cycle assessment (LCA) is performed to ISO standards to develop an EPD, after which both the EPD and LCA must be third party verified. Applies to nora 926 and 913 compound floor coverings and stair treads, and ESD and acoustic floor coverings.



**Health Product Declaration (HPD)**  
A transparency tool for evaluating whether a product supports Green Chemistry. As part of our work on Health and Materials, Interface continuously reduces the environmental and health impacts of our products through elimination of materials of concern. Applies to nora 926 and 913 compound floor coverings and stair treads, and ESD floor coverings.

## Integrated System

nora and Interface cover every area of your building – all from a single source. Create harmonious, space-specific design with our system of soft and resilient floor coverings, including special floorings, stair treads and accessories.

## Outstanding Service

From design to post-installation, we have the experts to support your project at every step and can even be a valued resource for your organization's sustainability mission.

## nora.com

For additional information regarding usage in recommended applications, contact us or visit [nora.com](http://nora.com).

➡ **ORDER SAMPLES**  
Online at [www.nora.com](http://www.nora.com)  
Call 1.800.332.NORA  
Email your sales rep or customer support specialist

**BROWSE NORA.COM**

- Find the right floor for your project with nora Flooring Finder
- Design your floor with the nora Room Designer
- Find technical and environmental documents

We have tried our very best to accurately represent product colors. However, due to the nature of printed materials, color of actual products may vary slightly. Please request a sample to see actual product color.

All product specifications reflect averages derived from product sample testing, are subject to normal manufacturing and testing tolerances and inherent pattern variances, and may be changed without notice. For more information about these and other important attributes of the product(s) described herein, including recycled content and limited warranty information, please see [nora.com](http://nora.com).

nora®, norament®, and noraplan® are trademarks owned by nora systems GmbH and registered in the United States, Canada, and other countries. Cradle to Cradle Certified® is a registered trademark of the Cradle to Cradle Products Innovation Institute. Other labels used here are trademarks of their respective owners.



PRODUCT NORAPLAN UNITA | COLOR 7120 NIGHT-N-DAY  
INSTALLED DIRECTIONAL



Printed on 50% post consumer waste (PCW)  
fiber manufactured using wind power.

**nora systems, Inc.**  
9 Northeastern Blvd.  
Salem, NH 03079  
T: 800.332.NORA  
T: 603.894.1021  
info-us@nora.com  
www.nora.com